



BECKER

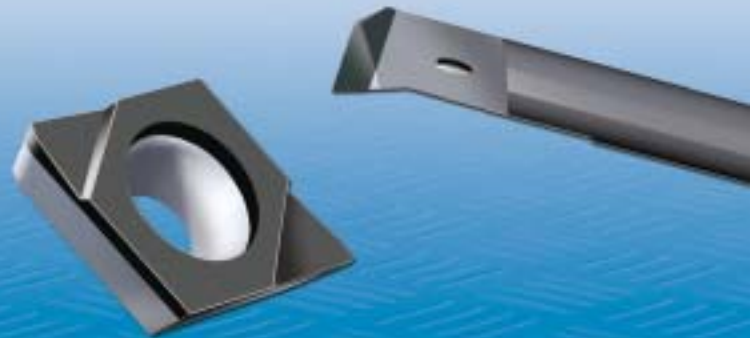
PCD & CBN Inserts & Tooling

Product Overview

FormCut



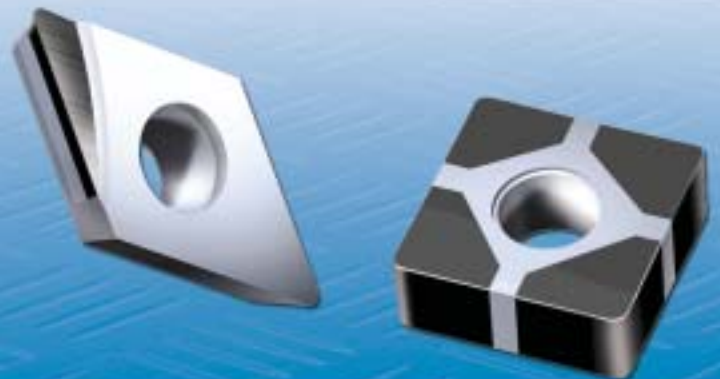
MiniCut



Milling



ISO-HardCut



RTC

Rani Tool Corp.

FormCut

External Grooving

10 grades CBN,
2 grades - PCD & MDC
2.5 - 5mm widths



Internal Grooving

10 grades CBN,
2 grades - PCD & MDC
1.5 - 2.5mm widths



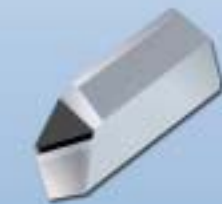
External Copying

10 grades CBN,
2 grades - PCD & MDC
8 different 60° partial profile



External Threading

10 grades CBN,
2 grades - PCD & MDC



MDC= Monocrystalline Diamond
(Natural Diamond)

External Profiling

10 grades CBN,
2 grades - PCD & MDC
different radii and wipers avail.



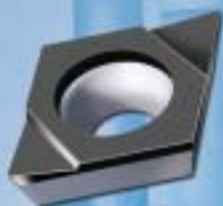
Internal holders available in
5/8", 3/4", 1", & 1.25" sizes



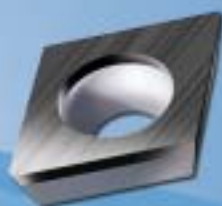
External holders available in
3/4", 1", & 1.25" sizes

MiniCut

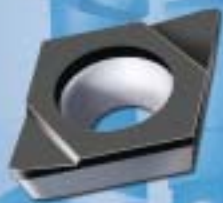
3/16" & 1/4" I.C. sizes
available in PCD & CBN!



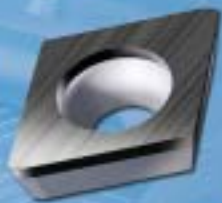
EPHT
(full face)



EPHW
(full face)



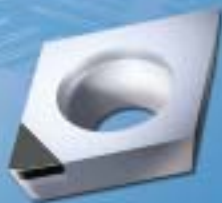
EPHT
(full face,
wiper)



EPHW
(full face,
wiper)



EPHT
(wiper)



EPHW
(wiper)

Tipped carbide boring bars!

- able to achieve depths of up to 7 x D!
- solid tungsten carbide design
- 75° positive insert style produces excellent cutter performance!
- featuring MAXICOOL™ through coolant technology!



Available corner radii:
.004", .008", .016", & .031"



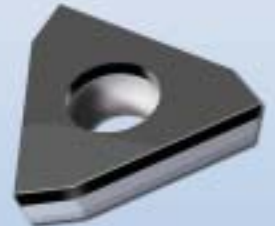
ISO-HardCut



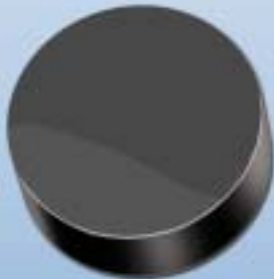
**Whole Edge
Positive Neutral**



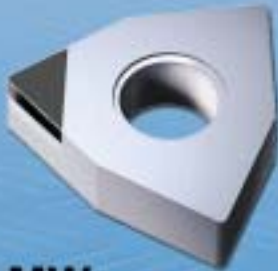
**MultiCut
(2 corners)**



**Full Face
(PCD & CBN)**



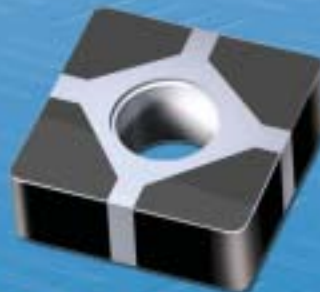
Solid



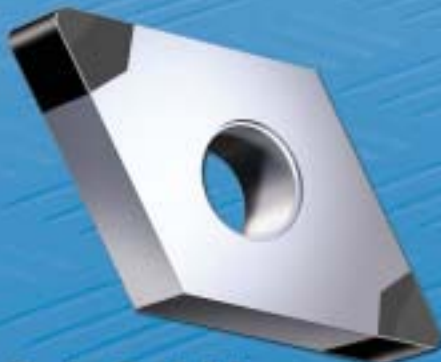
**MW
(1 corner)**



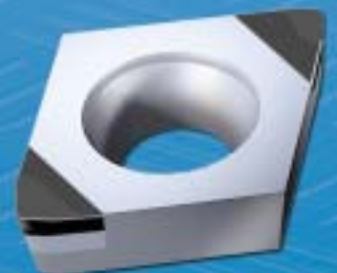
**Positive PCD
(right & left hand)**



**PolyCut
(8 corners)**



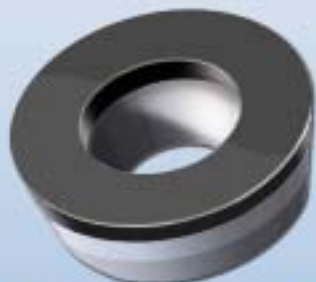
**PolyCut-M
(4 corners)**



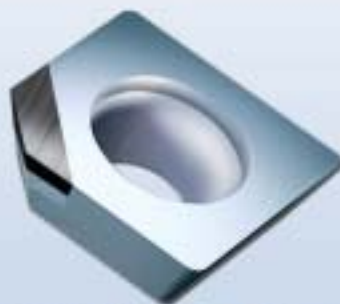
**Positive Neutral
(with Wiper Edge)**

Please see catalogue
for complete product range

Milling



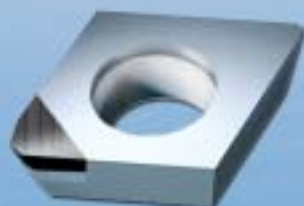
RDHX-0702MO
RDHX-1003MO
RDHX-12T3MO
(full face PCD & CBN)



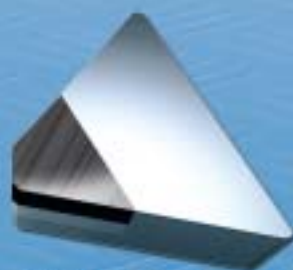
SEHW-43-AF
SDHW-43-AE
(neutral -
CBN & PCD)



SPKN-42-ED
(neutral -
CBN, PCD & MDC)



CPGW-43-PD
(neutral -
PCD & MDC)



TPKN-32-PD
TPKN-43-PD
(neutral -
CBN, PCD & MDC)



SPGT-43-ED
(positive right hand)



SEKN-42-AF
(neutral -
2 grades PCD avail.)

RTC **Rani Tool Corp.**

205 Kelsey St., Unit #103, Newington, CT 06111

Tel: (888) 554-RANI or (860) 665-7771 • Fax: (860) 665-7319

E-mail: sales@ranitool.com • www.ranitool.com

Available from:

Specifications are subject to change without notice. No responsibility for errors and/or printing errors will be accepted.

AGENT & DISTRIBUTOR INQUIRIES WELCOMED